

# HWT-NVR800-A02-16P

## Technical Specifications

### 16-channel 2-disk network video recorder



### Features

#### High performance and flexibility

- 16-channel network video access and 168 Mbit/s video input
- One HDMI port and one VGA port for simultaneous 4K HD output
- Two SATA ports
- Multiple Camera intelligent capabilities, whitelist-based facial recognition, blacklist-based alert, stranger detection, face search, perimeter detection, regular customer analysis, and attendance taking
- Up to 16-channel simultaneous playback and reverse playback
- Preview, storage, and playback of 4K HD network video
- Playback of video from external USB hard drives
- Search of recordings by time, recording type, bookmark, or AI event
- Two storage modes: disk quota and disk group. Each channel has their own recording storage capacity or period.

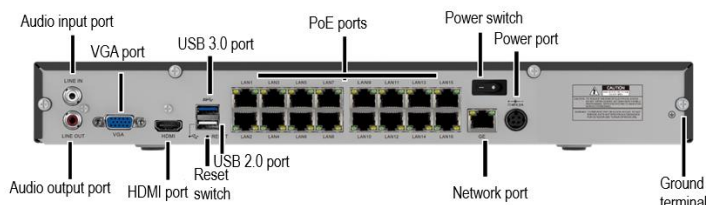
#### Usability and maintenance

- 16 built-in PoE network ports; plug-and-play and automatic discovery and configuration
- Adaptive access to H.265 and H.264 cameras
- Quick device registration and access using QR codes
- User-friendly UI
- Centralized camera management: setting camera parameters, importing and exporting information, enabling voice intercom, and batch upgrading
- Log functions: operation logs, system logs, alarm logs, parameter modification logs, recording logs, intelligent log check, and log storage

#### High security and reliability

- Locks important recording files.
- Uses the embedded Linux operating system to ensure 24/7 stable running, protecting the system from hacker attacks and viruses.

### Physical Ports



Product Model	HWT-NVR800-A02-16P
<b>Controllers</b>	
CPU	32-bit multi-core high-performance processor
Memory	8 GB (DDR4)
<b>Performance</b>	
Video input	16 channels, 168 Mbit/s access
Video forwarding	128 Mbit/s
Playback/Download	128 Mbit/s playback
Local decoding	8MP (4K): 2-channel 30 fps; 4MP: 4-channel 30 fps; 2MP (1080p): 8-channel 30 fps The decoding performance deteriorates by 50% when the NVR800 works with HOLOWITS Cameras to enable the AI function.
<b>Video output</b>	
HDMI	One HDMI 1.4 port; resolutions: 1024 x 768, 1280 x 720, 1280 x 1024, 1440 x 900, 1920 x 1080, 2560 x 1440, 3840 x 2160
VGA	One VGA port; resolutions: 1024 x 768, 1280 x 720, 1280 x 1024, 1440 x 900, 1920 x 1080
Preview	1/4/6/8/9/10/12/13/14/16 panes
<b>Storage capacity</b>	
Disks	2
Disk port	SATA2.0
Disk type	4TB/6TB/8TB per port
<b>Recording</b>	
Recording mode	Manual recording, scheduled recording, motion detection-triggered recording, and recording triggered by I/O alarms
Recording playback	16-channel simultaneous playback; controls: fast forward (2x, 4x, 8x, or 16x) and slow-down (1/16x, 1/8x, 1/4x, or 1/2x)
Search mode	By time, recording type, or AI event
Download mode	In batches or by segment
<b>Compatibility</b>	
Video format	H.264/H.265
Audio format	G.711a/G.711u
Network protocols	TCP, UDP, RTP, RTSP, HTTP, DNS, NTP, SMTP, and DHCP
Device access	HOLOWITS SDK and ONVIF
Web access	Compatible with Internet Explorer 9, 10, and 11
<b>Management/Maintenance</b>	
Management mode	Web and LDUI
Log type	Log functions: operation logs, system logs, alarm logs, parameter modification logs, recording logs, intelligent log check, and log storage
<b>External ports</b>	
Network port	1 x 10/100/1000 Mbit/s Ethernet port; 16 x PoE port (10/100 Mbit/s Ethernet port)
USB port	3 x USB ports (one USB 2.0 port on the front panel; one USB 2.0 port and one USB 3.0 port on the rear panel)
Audio input	1 channel, RCA port
Audio output	1 channel, RCA port
<b>PoE</b>	
Port	16 x 10/100 Mbit/s Ethernet port
Standards	IEEE802.3af/at
Output power	≤ 142 W
<b>Others</b>	
Operating temperature	0° C to 45° C
Operating humidity	20% to 90%
Power consumption	≤ 13 W (excluding hard disk and PoE output)
Power supply	48 V/3.75 A
Dimensions	Equipment dimensions 54 mm (H) x 300 mm (W) x 302 mm (D) Package dimensions 95 mm (H) x 480 mm (W) x 370 mm (D)
Shelf	1 U
Weight	Net Weight 2.3 kg (excluding hard disks) Gross Weight 2.9kg (excluding hard disks)
<b>Certification</b>	
Certification	CE, RoHS, WEEE, CCC and CQC